

## Rob Goes to Washington



On Oct. 31, 2016, I was invited to speak in Washington, D.C., to the White House Council on Environmental Quality, the USDA Forest Service, and the U.S. Department of the Interior. Why? To provide information and expertise on the paleontological resources of southeastern Utah, an area that has been receiving intense scrutiny as one that needs additional protection for its natural and cultural resources. As a paleontologist who has spent almost all my career working in and researching this region, I was in a unique position to provide information to our government that could help ensure that research into this incredible area would not be overlooked or hurt by any decision that was made.

At the time, two proposals were on

the table. One, a bill in the House of Representatives co-sponsored by Reps. Bishop and Chaffetz, would have designated large portions of southeastern Utah as National Conservation Areas, settled the status of many pending wilderness study areas, and transferred portions of federal land to the State of Utah or “disposed” of it to private buyers. The second proposal was by a coalition of Native American tribes in the region to create a Bears Ears National Monument. It would protect more land than the NCA proposal while not disposing of land to private buyers or to the state. Both proposals had merits but of greatest concern to the Museums of Western Colorado was the fact that neither of these proposals addressed paleontological resources. The bill sponsored by Bishop and Chaffetz only suggested that a “person with paleontological experience” serve on an advisory board for the proposed NCA while the National Monument proposal had no mention of paleontology at all.

During the start of 2016 I attempted to address these issues. I began writing and speaking to people and groups on both sides of the conservation issue. Although I never heard back from the team working on the House bill in any meaningful way, I did get a chance to speak to the Secretary of the Interior, the director of the BLM, and several other folks during a public hearing in Bluff in June. In September I was

asked if I would be willing to present about paleontology in the region to the administration and the agencies involved. Despite never having been to Washington, D.C. before, I was thrilled at the opportunity. Despite going to the most political location in the United States a week before a bitter presidential election, the attitudes of everyone I met there was cordial and non-partisan. It was great to have a receptive audience for the message too; paleontology is important, new discoveries are coming out of this area now and it has been poorly researched in the past, and acting without including paleontology in either congressional legislation or a monument proclamation would adversely impact future work. This is the same area where MWC successfully ran a youth paleontology field school last year, and any action by the administration that didn’t address paleontology would severely hurt our efforts to continue that nationally acclaimed program.

As of this writing, the Bishop and Chaffetz bill has died in the House but the Monument proposal is still alive. Whether or not the president will use his authority under Congress to act is an open question but I believe that my work has brought the importance of paleontological resources into the eyes of those making those decisions. Only time will tell what the final outcome will be.

*Please see the follow-up on the next page.*

## Bears Ears Follow-up

On Dec. 28, 2016, President Barack Obama used the authority assigned to him under the Antiquities Act of 1906 by Congress to declare a Bears Ears National Monument. Now, most of the public debate surrounding this area has focused on the wealth of ancient sites, artifacts, rock art, and tribal connections to the area. But the paleontological resources of the area are also highly significant (see my accompanying article about my trip to Washington, D.C. on the front page).

It is with great relief that I read the proclamation and saw that paleontology was explicitly called out and protected under the proclamation. Before I got involved in the process no one on either side of the issue had seriously considered paleontology in the region. No matter what happens going forward we know that paleontology in the region will be protected. By explicitly mentioning it in the proclamation, the president has acknowledged that the resources are significant not only to the area but to the country as a whole. We are continuing our research in the area with two aggressive excavations scheduled for 2017 in the Bears Ears, along with continuing high school field camp work.

I am glad that the administration was willing to listen to the concerns of scientists from around the country about this area and the importance of paleontology in understanding its history. Looking forward, this proclamation serves as a framework for future paleontological work in the region. Nearby Grand Staircase-Escalante National Monument has similar language in its proclamation, which has enabled a flowering of scientific research across the Grand Staircase. Virtually all of the new dinosaur species coming from that area (more than 95 percent of them) have been described since the Monument was declared and the wording of the proclamation has allowed that to happen. Horned dinosaurs, duck-billed dinosaurs, and young relatives of *Tyrannosaurus rex* have all been named in the last two decades. Hopefully, with paleontology being singled out and protected in Bears Ears National Monument, a similar explosion in our knowledge of the past will occur here. We at the Museums of Western Colorado will certainly do our part to ensure that happens, but only time will tell for sure what will be uncovered.

Robert Gay  
Curator of Education

**Through strong stewardship and relevant programming, the Museums of Western Colorado strives to inspire the community to preserve its heritage and tell its story.**



Dinosaur Journey collects, preserves, interprets and displays evidence of the history of life and environments of western Colorado and geologically related surrounding areas.



The Loyd Files Research Library provides learning and research opportunities for exploring and interpreting western Colorado's past, present and future.

The Museum of the West is dedicated to the collection, preservation, exhibition and interpretation of artifacts that represent the rich heritage and history of western Colorado and the contiguous areas of the American West.

Cross Orchards Historic Site utilizes living history to preserve, interpret and educate the public on agriculture, transportation and the social history of the region.

**Museums of Western Colorado**  
**P.O. Box 20000**  
**Grand Junction, CO 81502-5020**  
**970.242.0971**

[www.museumofwesternco.org](http://www.museumofwesternco.org)  
Subscribe to e-news and more at  
[newsletter@westcomuseum.org](mailto:newsletter@westcomuseum.org)  
or on our website.

*Museum Times* is the bimonthly newsletter of the Museums of Western Colorado informing members and supporters of news, programs, and events.

Museum membership entitles you to free admission to all of our sites, as well as discounts for various programs. Check our website for updated membership fees.



Find us on  
**Facebook**

# Program News

## Oral History Program Every 3rd Thursday at Noon Whitman Educational Center 248 S. Fourth St.

Jan. 19



Our January Oral History will be about the history of Mesa County Libraries from its early days to its current 8 branch system. The program will be presented by Joseph Sanchez, director of Mesa County Libraries.



Feb. 16 - TBA

Oral History Programs are jointly sponsored by the Museums of Western Colorado and the Mesa County Historical Society and are free to the public.

## Collaboration with Fruita Monument High School

As Curator of Education I take the job of involving the youth of today in our Museums seriously. Even before coming to work for the Museums I was ensuring that tomorrow's leaders saw the value and importance in museums and research through a high school paleontology program. I am proud to announce that this idea is now being carried forward here in the Grand Valley.

In the fall of 2016, I began working with Billy Johnson, a geology teacher at Fruita Monument High School; and Maria Duel, the STEM coordinator at District 51. The plan was that students from Mr. Johnson's class at FMHS would come to Dinosaur Journey in Fruita to not only experience the exhibit hall but also to have an ongoing place in museum operations. Student introductions occurred in October of 2016 and Mr. Johnson has been at work with D51 to make sure the proper paperwork is in place on their end.

Starting in the spring of 2017, students from the FMHS geology class will be coming to Dinosaur Journey to help with exhibit setup, fossil preparation, collections cleaning, and other aspects of museum operations. Not only will this help the Museums with needed work but it will give students a peek behind the scenes of what really goes on in a museum.

Additionally, this will set students up to be in a good position for the summer. We will be hosting two high school paleontology camps this summer, June 5-18 in the Bears Ears and June 21-29 in the Gateway area. By having local students involved with the Museums before these camps start, we hope to encourage them to participate in these camps as well. Several students I have worked with over the last three years have gone on to co-author peer-reviewed scientific papers while still in high school or as college undergraduates, received scholarships for their work, and traveled to international conferences to present on their research.

With this partnership in place, the groundwork has been laid for students in our area to achieve great things in science while the Museums support our community. I'm very excited to see what this partnership brings us in 2017!

Rob Gay  
Curator of Education

# Trips and Tours 2017

## Grand Mesa Snowshoeing

January 28 • Register by January 20

Led by Robert Gay

Travel to Grand Mesa and experience the forest in winter. We will snowshoe the County Line Trail winter trails system through open ponderosa forest toward Scales Lake. Along the way, learn about the natural history of the Grand Mesa from its geological origins to the lifeways of the animals that survive its frozen top during the winter. After a snack break at the lake we will return to the trailhead via the Dog Trail allowing new vistas to be taken in. Afterward we will have a late lunch at Mesa Lakes Lodge and then head back down the Mesa in the late afternoon.

**\$95/Museum member; \$105/Non-member** - Includes transportation, snowshoe rental, and snacks



## Toast to the Rockies: No (Historic) Bar Too Far

February 22 • Register by February 1

Led by Dr. Peter Booth

Discover aspects of Colorado's more colorful heritage as we tour historic saloons of the Roaring Forks River Valley from Glenwood Springs to Aspen. These watering holes often harbor cherished memories from all walks of life that many have forgotten. These range from presidential stays at Hotel Colorado to coal mining roots found at the Black Nugget Saloon in Carbondale to a drink called Aspen Crud served at Hotel Jerome during Prohibition.

**\$110/Museum member; \$120/Non-member** - Includes transportation, appetizers at two of our stops, and lunch at Hotel Colorado. Drinks are on your own.

Photo courtesy of Loco Steve



## Rock Art of Canyon Pintado

March 18 • Register by March 1

Led by Dr. John Seebach

Learn about your back yard and meet your past neighbors. Join Colorado Mesa University Professor of Archaeology Dr. John Seebach as he leads this tour into Canyon Pintado, famous for its wealth of Fremont and Ute rock art. At various locations throughout Canyon Pintado, we will be seeing rock art first described by the Dominguez-Escalante expedition including impressive pictographs that tower above modern-day Highway 139. During this journey, we will also learn about the artists who left behind the rock art.

**\$85/Museum member; \$95/Non-member** - Includes transportation and lunch



## Arches National Park Geology

March 31 • Register by March 17

Led by Dr. Julia McHugh

Explore the iconic Arches National Park with a geologist! We will tour the amazing cliffs, canyons, needles, windows, and arches of the park with plenty of time for a few easy, short hikes to see Balanced Rock, Double Arch, Delicate Arch, and more. Discover how these amazing works of nature were formed from solid beds of sandstone. Be sure to bring your camera and wear good walking shoes for this spectacular red rock tour.

**\$85/Museum member; \$95/Non-member** - Includes transportation, park admission, guide, water, and lunch



# Trips and Tours 2017



(c) App555 | Dreamstime.com

## Grand Tour of Great Britain

September 2-16 • Register by January 31

Led by Erin Schmitz

Discover what makes Great Britain truly great as you explore this delightful island from top to bottom. Start in Edinburgh, the Georgian Scottish capital, before heading south to Wales, passing through the lovely English countryside and historic cities like York and Liverpool along the way. Then it's off to the Roman town of Bath and royal London—the perfect finishing touch on this quintessentially British experience.

Photo courtesy of Erin Schmitz

The tour includes all breakfasts, five three-course dinners, private motor coach, guided sightseeing, select entrance fees, and airfare from Denver, Colorado.

**\$5,600/Museum member; \$5,800/Non-member**  
**\$450 deposit; due by January 31**

(c) Majaphoto | Dreamstime.com



# Board of Director Ballot

## Museums of Western Colorado 2017 Board of Directors Election Ballot

The Museums of Western Colorado (MWC) Board of Directors recommends the following slate of nomination to the Board for a three-year term, beginning Jan. 24, 2017. Please mark your ballot and return it to the MWC via mail or in person by 4 p.m. Friday, Jan. 20, 2017. Election results will be announced at the MWC Heritage Awards on March 7, 2017.

### New Board Member Nominations

#### **Arlene Baker, Regional Manager, Bank of the West**

Arlene Baker joined Bank of the West as an RBG Regional Manager and Senior Vice President in October 2008. In her role, Baker is responsible for all sales growth and branch supervision for 31 branch locations in Western Colorado, Utah, and Western Wyoming. Baker has more than 40 years of banking experience and previously served as Market President and Western Colorado District Manager for US Bank. A resident of Grand Junction, Baker has served as President for the Grand Junction Musical Arts Association, Junior Service League, and The March of Dimes. Baker has received the Commission on the Arts and Culture's annual Champion of the Arts Award and Junior Service League's Patti Millius Service Award. Baker's husband is a former MWC Board President.



#### **Michael C. Santo, Co-Founder & Managing Attorney, Bechtel & Santo**

Michael Santo began practicing law in his home state of Michigan in 1992 after receiving his undergraduate degree from Michigan State University and his law degree from the University of Detroit. After graduating from law school, he fulfilled a life-long dream of moving to Colorado when he accepted a position with Dufford, Waldeck, Milburn & Krohn and later co-founded the firm of Bechtel & Santo with Betty Bechtel. Today, Santo is the managing attorney of Bechtel & Santo. He is a frequent lecturer on employment law issues, and was a contributing author of "The Practitioner's Guide to Colorado Employment Law, Continuing Legal Education in Colorado Inc." (1999) and "The Practitioner's Guide to Colorado Business Organizations" (2004). In 2014, the Colorado Bar Foundation invited Santo to become a fellow of the foundation, an honor restricted to no more than 5 percent of lawyers in Colorado.



#### **Sandra D. Zoldowski, Vice President/General Manager at Nexstar Broadcasting Group (KREX)**

Sandra Zoldowski is a native of Colorado. She majored in marketing at Fort Hays State University in Hays, Kansas, and earned a bachelor's degree in business administration. Zoldowski moved to Billings, Mon., following graduation, where she worked as the National Marketing Director for the international office of Kampgrounds of America. After 15 years at KOA, she decided to venture in a different direction. In 2005 she joined Nexstar Broadcasting, and in 2009 was promoted to Vice President/General Manager of KSVI/KHMT. In 2015 Zoldowski was again promoted and moved to Grand Junction where she serves as the VP/General Manager of KREX KREG KREY/KGJT/KFQX.



**Current board members nominated for another three-year term:**

- Cary Baird
- Orville Petersen
- Catherine Robertson

On the ballot sheet below, please vote for or against this slate of candidates. Vote for as many candidates as you wish. Please return or drop off the ballot by Jan. 20. If accepted, the nominees will serve a three-year-term starting Jan. 24.

Thank you very much for your support and participation.

Peter Booth  
Executive Director

----- Clip Here -----

**Museums of Western Colorado 2017 Board of Directors Election Ballot**

Please place a mark next to any or all of the nominated you want to elect.

**First-Term Board members**

- \_\_\_\_\_ Arlene Baker, (1st3-Year-Term, 2017-2019)
- \_\_\_\_\_ Michael Santo (1st3-Year-Term, 2016-2018)
- \_\_\_\_\_ Sandra Zoldowski (1st3-Year-Term, 2016-2018)

**Additional Term Board members**

- \_\_\_\_\_ Cary Baird (2nd Term, 2017-2019)
- \_\_\_\_\_ Orville Petersen (2nd Term, 2017-2019)
- \_\_\_\_\_ Catherine Robertson (2nd Term, 2017-2019)

This ballot must be returned by Friday, Jan. 20, 2017 to:

**Museums of Western Colorado**  
P.O. Box 20,000  
Grand Junction, CO 81502

# Museum of the West — Curator's Corner

## New Discovery About the Use of Flint in Early Spanish Colonial Wheellock Pistols

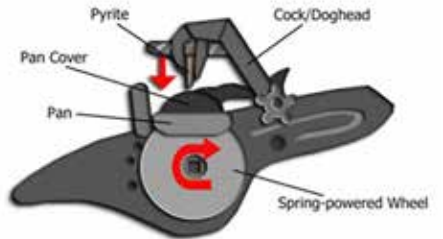
By

Director of the Western Investigations Team/Curator of History

David P. Bailey

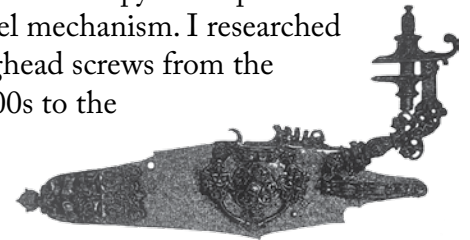
Copyright© 2016 All Rights Reserved

It has been assumed by historians and archaeologists that wheellock pistols used in the New World by Spanish Colonial adventurers and explorers used pyrite, not a flint ignition system. The earliest wheellock pistols were invented in the early 1500s. The pistols had a spring-loaded wheel mechanism that was wound up and then an arm (doghead) holding the pyrite was set down on the wheel. Once the geared wheel was released against the pyrite it would create sparks that ignited the gunpowder in the barrel and fired the projectile.



The Western Investigations Team excavation of the Redoubt Site, a small fort-like structure near Kannah Creek, Colorado, and a nearby stone wall revealed numerous fragments of Spanish Colonial armor and fragments of an early wheellock pistol that included a trigger guard (left).

One of the most interesting pieces discovered was an ornate twisted filial doghead screw that was used to hold pyrite in place to ready it for contact with the wheel mechanism. I researched the different designs used on doghead screws from the earliest artistic designs in the 1500s to the



later, more utilitarian, models in the 1600s. I found the early Spanish wheellock histories documented the use of twisted filial doghead screws to the 1590s (right) and the screw we recovered at the Redoubt Site was very similar in design.

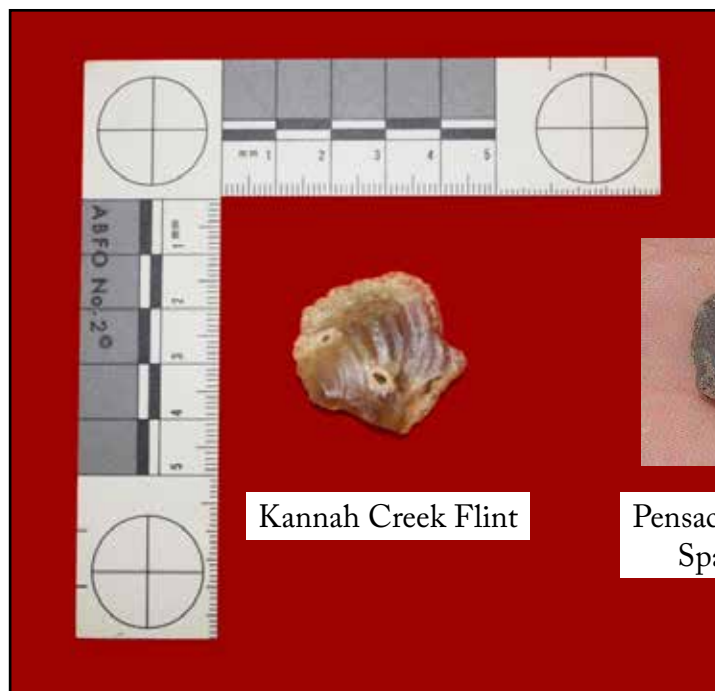
The other interesting reference was that early wheellocks of this design did not use pyrite as their ignition system but instead used flint. These early wheellock weapons were known in Spanish as “Llave de Pedernal” or “Key of Flint” and used an unusual fan-shaped flint to create friction on the wheel mechanism. Even more intriguing was that the Western Investigations Team had found honey-colored, fan-shaped flints at the Redoubt Site as well as at the nearby stone wall (right).



I conducted further research at Spanish Colonial archaeological sites across the United States and found similar flints to the ones we discovered at the Redoubt Site and the stone wall. These honey-colored flints had the same fan shape and flat edge at the bottom. They are often referred to by archaeologists as spall-type gunflints, meaning they were made from nearby sources and not imported from European flint suppliers. However, my new research indicates that these so-called spall flints could have been the type specifically made for early Spanish flint wheellocks and may change the interpretation of many historical sites across the country.



What does this mean for the Redoubt Site? The site has been interpreted by some archaeologists as a collection point of discarded Spanish Colonial metal taken there by the Utes for trading purposes. But what would the fan-shaped flints used by a 1590s wheellock pistol, as indicated by the filial design of the doghead screw, be doing there unless the gun had been originally intact with the proper flints used for firing it? Could there have been a post-Coronado Spanish Colonial expedition to western Colorado? Extensive research is needed to answer these questions and I will keep you posted on the Western Investigations Team's new discoveries and their subsequent results from the Redoubt Site.



Kannah Creek Flint



Pensacola, Florida Flint  
Spanish Frontier



Los Adaes Presidio  
Louisiana



*25th Anniversary*

January 2, 2017 marked my 25th year as Curator of History at the Museums of Western Colorado.



I want to thank all the hardworking museum boards, directors, staff members, and great volunteers I have met and worked with these last twenty-five years.

It was a fun and challenging experience the day I started and it still is today. We have grown so much from the little museum on the corner of 4th and Ute to the large and accredited Museums of Western Colorado with three great museums, a research library, quarries, and outdoor sites.

Thanks again! I look forward to our future endeavors.  
Dave Bailey

# Museum Education Class

When most people in the Grand Valley think about their local heritage, what do they think of? Do they think of the Museums of Western Colorado? Or do they think of one of our sites, such as Cross Orchards Historic Site or the Museum of the West? Many people who walk through the door of Dinosaur Journey Museum in Fruita are not aware that it, too, is under the umbrella of the Museums of Western Colorado. Despite the wealth of community services we offer, from preserving local history to active scientific research in the region to hosting events that bring the community together, the general public tends to view the separate museum sites as completely disconnected. In the summer, while digging at the Mygatt-Moore Quarry in Rabbit Valley, local visitors didn't realize that this nationally significant local treasure is not only worked by MWC crews but co-managed by the Bureau of Land Management and the Museums of Western Colorado.

Fortunately there is a way for locals to learn more about all of the Museum's sites and the important roles they play in our community. Starting this February, the Museums of Western Colorado will be hosting its first-ever museum education class. This exciting free class will allow members of the general public to experience the Museum in a way they haven't been able to before.

The class will start on Monday, Feb. 6 with an overview of what the Museums of Western Colorado does and is. Executive Director

Peter Booth will introduce the class and Curator of Museum Education Rob Gay will then go over the history of the Museum, what the Museum offers, and how people have been involved over the last 50 years. During this time class participants will also get to know each other and get basic questions answered.

The next week the class begins getting in-depth with the museum sites on Monday, Feb. 13. Participants will get not only a tour of the exhibits at Dinosaur Journey but our Curator of Paleontology will take participants behind the scenes to tour our collection facility (including our new expansion!) and our lab. You will be able to talk with volunteers and staff about the amazing things that occur every day at Dinosaur Journey. Following a lunch at DJ, participants will be taken to several fossil sites around the Grand Valley, including the site where Elmer Riggs discovered the first-ever *Brachiosaurus*. The Museum owns this unique location, helping our community preserve this amazing piece of natural and historic heritage for the region.

The following week, on Monday, Feb. 20, the class will be visiting Cross Orchards! This historic living history farm preserves a part of the vanishing agricultural history of our area. As Grand Junction, Clifton, Fruita, Mack, Loma, and Palisade all continue to grow it becomes increasingly important to remember what brought settlers to this area in the first place: fertile land and abundant water for irrigation. Our Facilitator of

Cross Orchards will lead the group through the farm, barn, bunkhouse, and the collection of antique machinery on display.

The next week, Wednesday, March 1, is the last site visit of the class and it takes place downtown at the Museum of the West. Our Curator of History and the Curator of Collections and Archives will not only take participants through our gallery showcasing the history of humans in the Grand Valley from 12,000 years ago until today, they will also get another behind-the-scenes look into our collections and archives!

The final day of this Museum Education Class will take place on Monday, March 6. Participants will have a review of everything that was gone over (since it is a lot to take in!) and be given information packets about each site. There will also be a question-and-answer session and wrap-up. If participants want to volunteer with the Museum, there are going to be multiple opportunities to do so and we'll cover those as well!

The following evening is the Museum's annual Heritage Awards. Folks who completed the course will be presented with a certificate of completion during the ceremony. We feel strongly that, since the Museum couldn't do the job of preserving the heritage of the Grand Valley without others' expertise and service, it is only right for us to honor those who have gone the extra mile in learning more and have decided to carry forward that tradition of service and preservation of our shared past.

# News from the Director

## Museums of Western Colorado to Host 5th Annual Heritage Awards

The Museums of Western Colorado (MWC) will honor the recipients of the 2017 Annual Heritage Awards on March 7, 2017. The Heritage Awards celebrate the contributions of community members toward fulfilling the Museum's mission of discovering, preserving, and sharing the heritage of the Grand Valley.

The MWC relies on others in the community, either in cooperation with the museum or individually, to help fulfill this very important mission. It is an honor and privilege for us to be able to recognize leaders and organizations who have contributed so significantly to the community's heritage.

Awards are given to businesses and individuals in several categories; nominations will be accepted through Jan. 18. We will be honoring people and organizations in six areas:

- **Historian Award**
- **George Callison Paleontological Award**
- **Heritage Enterprise Award**
- **Museums Service Award**
- **Preservation Award**
- **Archeological Award**

For information on how to nominate someone, go to <https://museumofwesternco.com/event/5th-annual-heritage-awards/> or call Peter Booth at 970.242.0971, ext. 2204.

The awards ceremony will be held from 5-7 pm March 7 at Whitman Educational Center, next to the Museum of the West in Grand Junction.

## Colorado Gives Update: Thanks for your support

The MWC enjoyed a banner year with the Colorado Gives Campaign. There was 15 percent increase in the number of donors and they collectively donated \$33,635, which is a 14 percent increase over last year. This is also the highest amount the MWC has ever received via Colorado Gives. Thanks to your support, the MWC received \$1,066 from the statewide incentive fund.

### 2016 Colorado Gives Donors

6 Anonymous Donors	Lois & Merritt Kinsey
Debra & David Bailey	Nita Kroninger
Cary Baird	Betsy Leonard
Dana & Peter Booth	Karen Terrill McGuirk
Judy & George Callison	Ron Miracle
Randall Cupp & Anthony Angelo	Jennifer Murrell
Gary Dorosz	Sandie & Louis Nadelson
Tina Elliott-Armstrong	Summer-Leigh Pearce
Kathy Portner & Fife Keith	Bill & Judy Prakken
Lois & Edward Gardner	Susan Rawlins
William Findlay	Catherine Robertson
Joan George	Allison & Tim Sarmo
Lynne Habberfield	Tammy & Jon Schler
Stan McNeese & Sherri Helms	Gail & Barry Tuohig
Barbara Hill	Becky Utt
Sandy Horvath-Dori	Paula Willoughby
Stephanie Hudson	Donna & Bruce Winslow

As a reminder, MWC supporters can still donate through the Colorado Gives website. In fact, they can give anytime during the year. Also, they can set up a giving schedule. At least one person took advantage of that option and scheduled a monthly donation. Something to consider!

### End-of-the-Year Annual Fund Drive

Meanwhile, the End-of-the-Year Annual Fund Campaign is also enjoying a banner year. As of Dec. 20, we have already surpassed last year's donated amount by 10 percent. I look forward to thanking the Annual Fund Drive individuals in the next newsletter.

Thank you for all your support.



Museums of Western Colorado  
 P.O. Box 20,000  
 Grand Junction, CO 81502-5020  
 www.museumofwesternco.org  
 museumofwesternco@gmail.com

Non-Profit  
 Organization  
 U.S. POSTAGE PAID  
 Grand Junction, CO  
 Permit No. 194

RETURN SERVICE REQUESTED

**Cross Orchards Historic Site**

3073 F Road • 970.434.9814  
 Closed for the season

**Dinosaur Journey Museum**

550 Jurassic Court, Fruita • 970.858.7282  
 October 1-April 30  
 Monday-Saturday • 10 am-4 pm  
 Sunday • Noon-4 pm

**Museum of the West**

462 Ute (5th & Ute) • 970.242.0971  
 October 1-April 30  
 Monday-Saturday • 10 am-4 pm  
 Closed Sunday

**Loyd Files Research Library**

Second floor of Museum of the West  
 462 Ute (5th & Ute) • 970.242.0971  
 Tuesday-Thursday • 10 am-4 pm  
 Monday and Friday by appointment only

<i>January/February Calendar</i>				<i>Please note:</i> Dates and times of events, meetings, and programs are subject to change; please call to confirm.
<b>JAN</b>	<b>13</b>	10 am	Volunteer Craft Meeting	<b>Cross Orchards Historic Site</b>
	<b>19</b>	Noon	Oral History Program	<b>Whitman Educational Center</b>
	<b>27</b>	10 am	Volunteer Craft Meeting	<b>Cross Orchards Historic Site</b>
	<b>28</b>		Grand Mesa Snowshoeing Trip	
<b>FEB</b>	<b>6</b>		Museum Education Class	
	<b>10</b>	10 am	Volunteer Craft Meeting	<b>Cross Orchards Historic Site</b>
	<b>11</b>		Last day to see Western Colorado Weaponry Exhibit	<b>Museum of the West</b>
	<b>13</b>		Museum Education Class	
	<b>15</b>	10 am	Volunteer Meeting	<b>Cross Orchards Historic Site</b>
	<b>16</b>	Noon	Oral History Program	<b>Whitman Educational Center</b>
	<b>20</b>		Museum Education Class	
	<b>22</b>		Toast to the Rockies: No (Historic) Bar Too Far Trip	
	<b>24</b>	10 am	Volunteer Craft Meeting	<b>Cross Orchards Historic Site</b>