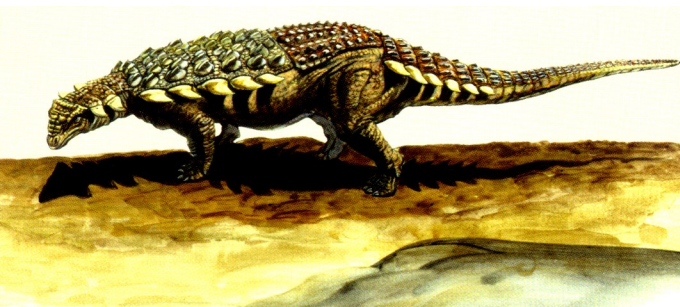


TRAIL THROUGH TIME



Trailhead:

Use Exit 2 (Rabbit Valley) off I-70, turn north into parking area.

About the Trail:

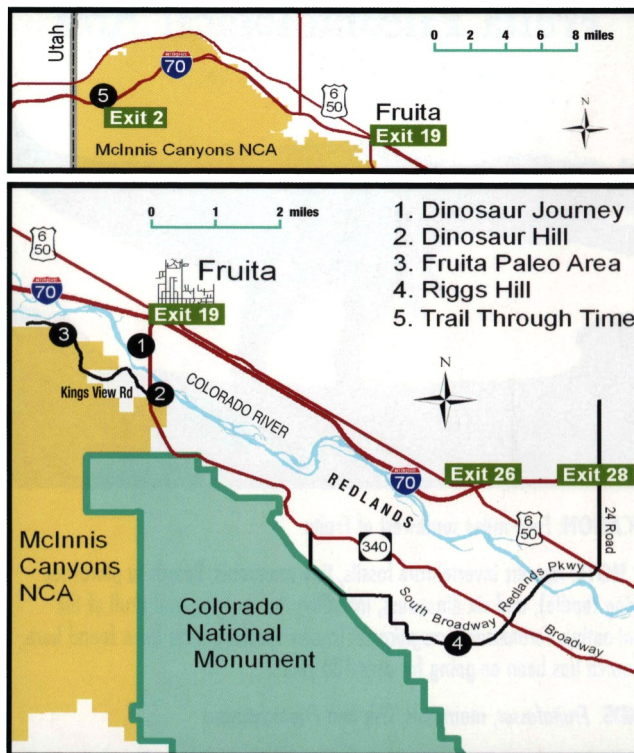
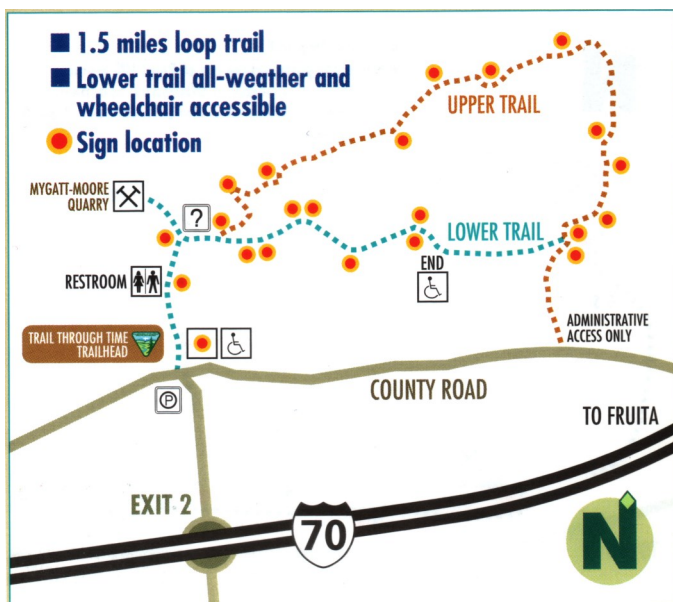
Shade shelters and a wheelchair accessible bathroom are available. Most of the lower trail is also wheelchair accessible. The upper trail loop climbs 140 feet and is mildly strenuous. Hiking the entire trail takes 1-1.5 hours, allowing for time to stop and read interpretive signs.

Important Discoveries:

This trail includes the Myatt-Moore Quarry, an active dinosaur quarry managed by the Museums of Western Colorado and the BLM. Excavations run during the summer months. Visit www.dinodigs.org to see the schedule and register for a dig.

Other Finds

Eight species of dinosaurs have been found here, including the small armored dinosaur, *Mymoorapelta* (12 feet long).



All trails are day use only. Camping and fires are strictly prohibited. Pack out your trash.

Carry water, use sunscreen, and wear a hat. Summer temperatures frequently reach 100 degrees.

All trails, except Riggs Hill, are within the McInnis Canyons National Conservation Area. For more information, visit:

Dinosaur Journey/Museums of Western Colorado:
www.dinosaurjourney.org

McInnis Canyons National Conservation Area :
<https://www.blm.gov/programs/national-conservation-lands/colorado/mcinnis-canyons>

It is ILLEGAL to Remove Fossils These Trails

Excavations are allowed only with scientific permits. The illegal removal of fossils can result in a major fine and/or imprisonment. Please contact the BLM at (970) 244-3000 if you suspect illegal digging or observe vandalism.

These trails are part of the Dinosaur Diamond Scenic Byway.



DINOSAUR TRAILS

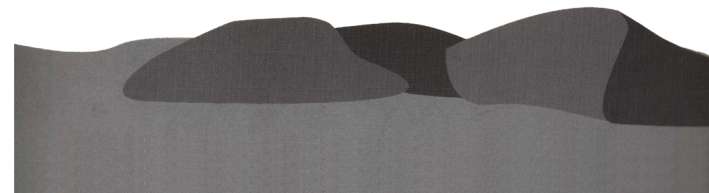
IN THE FRUITA AREA

Dinosaur Hill

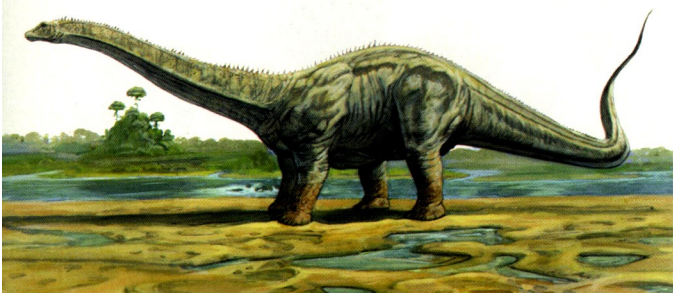
Fruita Paleontological Area

Riggs Hill

Trail Through Time



DINOSAUR HILL



Trailhead:

One mile south of Dinosaur Journey on the east side of CO-340.

About the Trail:

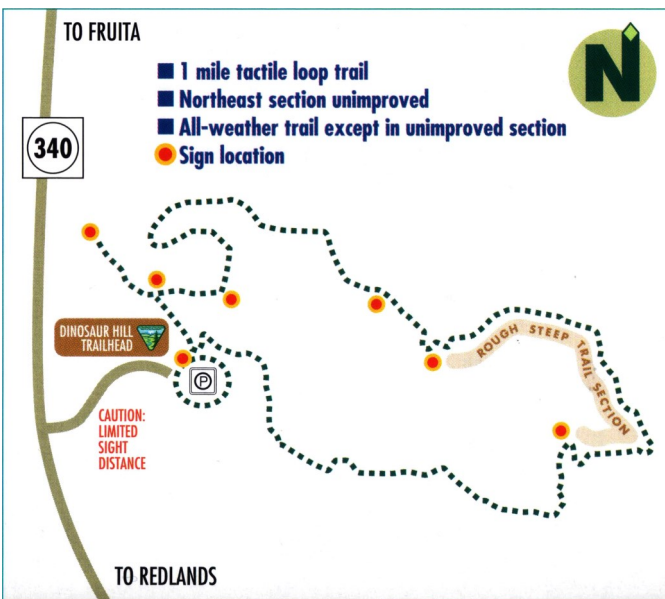
A mildly strenuous hike to the overlook provides panoramic views of the Grand Valley, Colorado National Monument, and the Colorado River. A covered picnic area and bathroom are available at the trailhead. Shade shelters are located along the trail. The one mile loop should take one hour to complete.

Important Discoveries:

The giant, plant-eating dinosaur *Apatosaurus* (also known as "Brontosaurus") was recovered here in 1901 by Paleontologist Elmer Riggs. This skeleton has been continuously on display at the Field Museum in Chicago since 1908.

Other Finds

A femur (leg bone) from a large, plant-eating dinosaur, such as *Diplodocus*, has been found here, along with a pterosaur (flying reptile), and juvenile *Camarasaurus* and *Stegosaurus*.



FRUITA PALEO AREA



Trailhead:

Four miles south of Dinosaur Journey in McInnis Canyons NCA.

About the Trail:

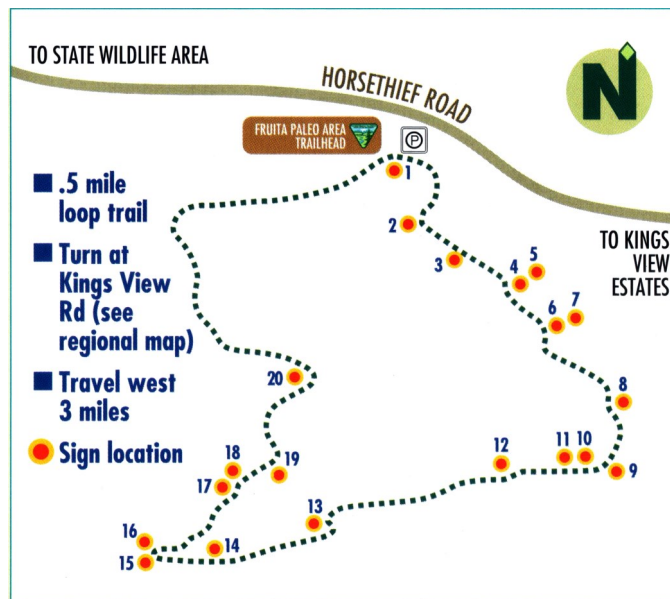
This easy half-mile loop trail takes about an hour to complete, allowing for time to read interpretive signs. A bathroom is at the trailhead. There are no shade shelters along the trail.

Important Discoveries:

Paleontological research in these badlands has been on-going for 100 years. Eight new species of Jurassic mammals, reptiles, and dinosaurs have been found here, including the skull and skeleton of *Ceratosaurus magnicornis*, the official dinosaur of the City of Fruita.

Other Finds

Primitive reptiles and snakes, fish, primitive mammals like *Fruitafossor*, and the primitive crocodylomorph *Fruitachamps*.



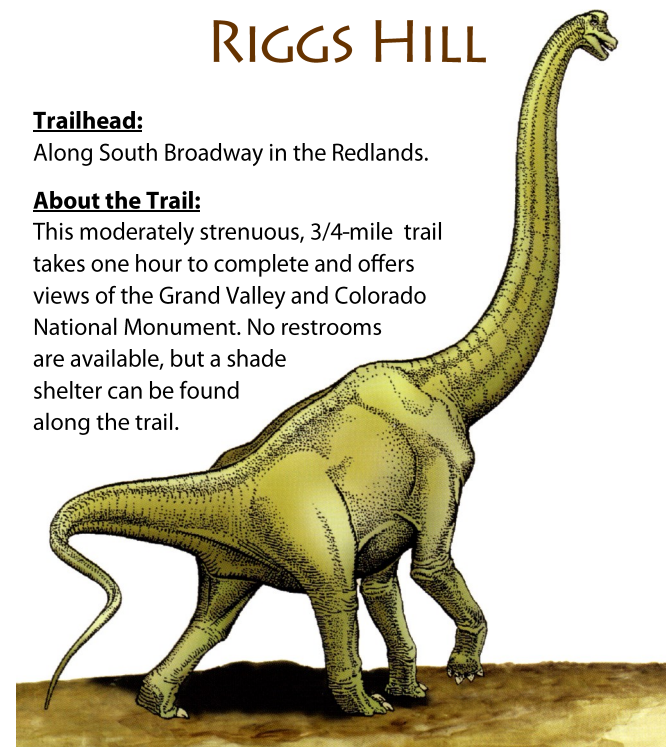
RIGGS HILL

Trailhead:

Along South Broadway in the Redlands.

About the Trail:

This moderately strenuous, 3/4-mile trail takes one hour to complete and offers views of the Grand Valley and Colorado National Monument. No restrooms are available, but a shade shelter can be found along the trail.



Important Discoveries:

In 1900, Paleontologist Elmer Riggs discovered the bones of the giant, plant-eating dinosaur *Brachiosaurus* here. At the time, this was the largest dinosaur to ever be discovered.

Other Finds

Remains of *Stegosaurus* and *Allosaurus* have been found here.

